

Global Health Cast 54

December 14, 2023



Dr. Melvin Sanicas
X @Vaccinologist



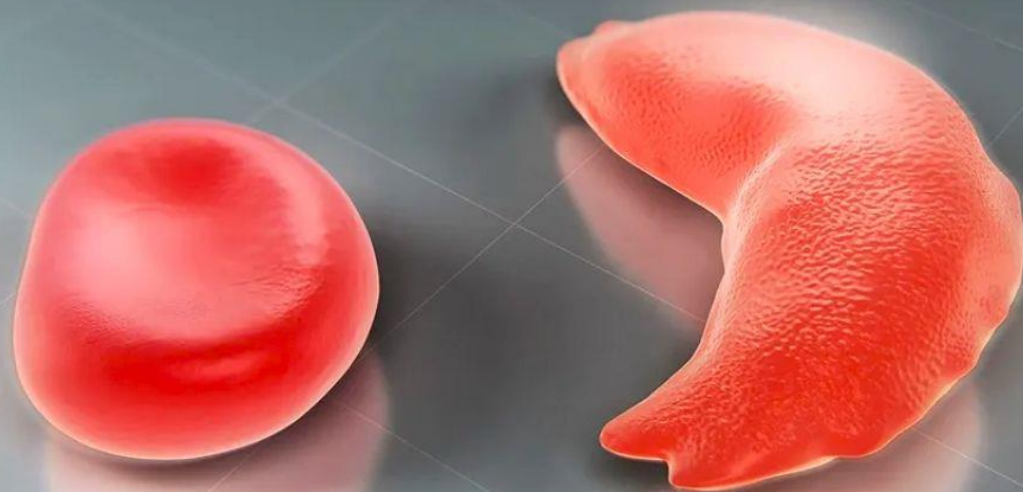
Prof. Dr. Joe Schmitt
X @Prof_Schmitt

Every Week

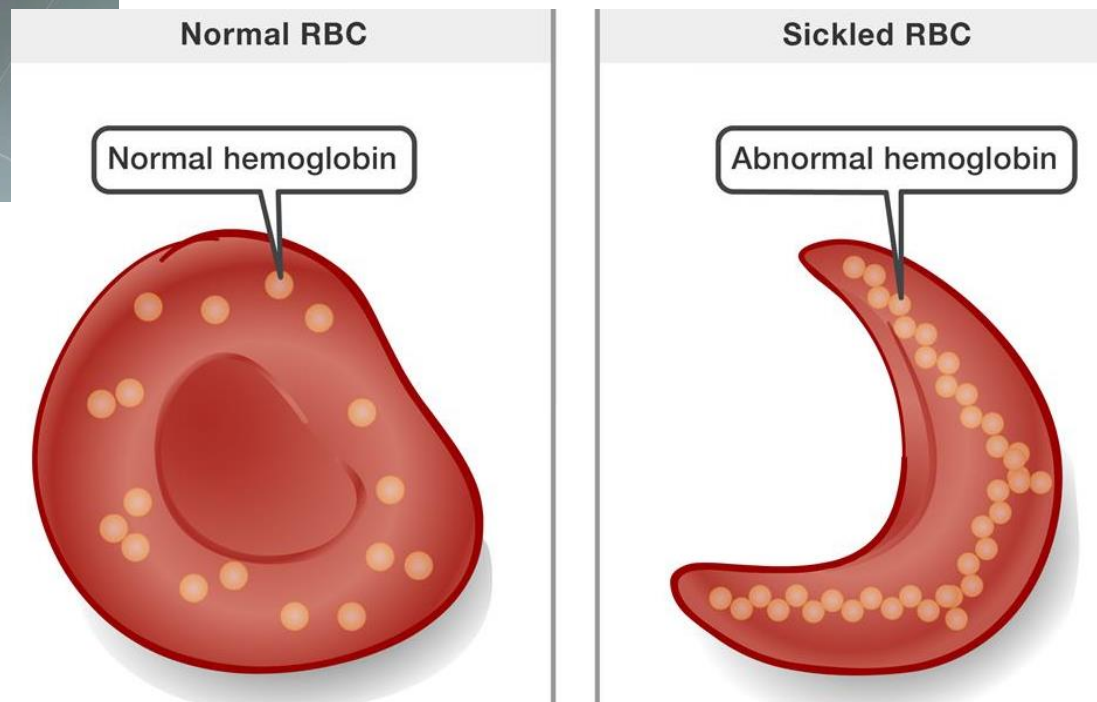
12.00 noon - CET

What we talk about today

- **The US FDA approved two cell-based gene therapies for sickle cell disease (SCD)**
- **GLP-1RAs associated with reduced colorectal cancer risk in drug-naive patients with Type 2 diabetes with and without obesity / overweight**
- **Infants exposed to COVID-19 in the uterus at an increased risk for developmental delays in the first year of life**
- **ARI – summary of available medications and vaccines**
- **How climate change may increase infectious diseases**



**The US FDA approved two
cell-based gene therapies for
sickle cell disease (SCD)**



Research Letter

ONLINE FIRST



December 7, 2023

GLP-1 Receptor Agonists and Colorectal Cancer Risk in Drug-Naive Patients With Type 2 Diabetes, With and Without Overweight/Obesity

Lindsey Wang¹; William Wang¹; David C. Kaelber, MD, MPH, PhD²; [et al](#)[» Author Affiliations](#) | [Article Information](#)

JAMA Oncol. Published online December 7, 2023. doi:10.1001/jamaoncol.2023.5573

In this cohort study, **GLP-1RAs were associated with reduced CRC risk in drug-naive patients with T2D with and without obesity/overweight**, with more profound effects in patients with obesity/overweight, suggesting a **potential protective effect against CRC partially mediated by weight loss and other mechanisms not related to weight loss.**

Developmental impairment in children exposed during pregnancy to maternal SARS-COV2: A Brazilian cohort study.

[Carolina A.D. Santos](#)   • [Artemis P. Paula](#) • [Gentil G. Fonseca Filho](#) • ... [Aline L.P. Silva](#) • [Érika G.C. Silva](#) •

[Lília D'Souza-Li](#) • [Show all authors](#)

Open Access • Published: December 05, 2023 • DOI: <https://doi.org/10.1016/j.ijid.2023.12.001>

Highlights

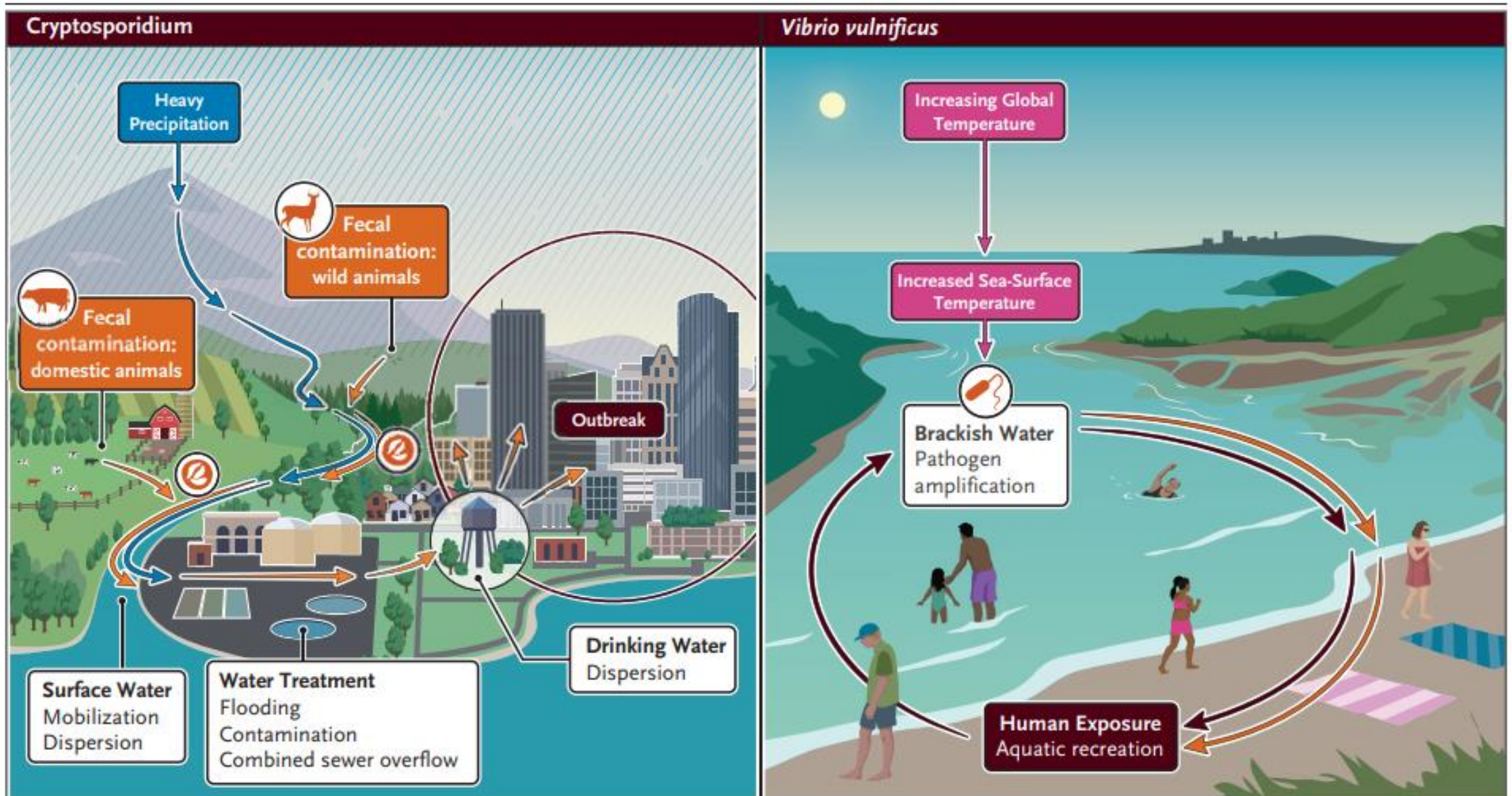
- A prospective cohort of infants exposed to maternal SARS-CoV-2 intra uterus.
- SARS-CoV-2 exposed infants had an increased risk of neurodevelopmental impairment.
- Fine motor and personal-social were the subdomains most at risk of delay.
- 10% of exposed infants had an abnormal result at cranial sonography.

Prevention and Therapy of ARI

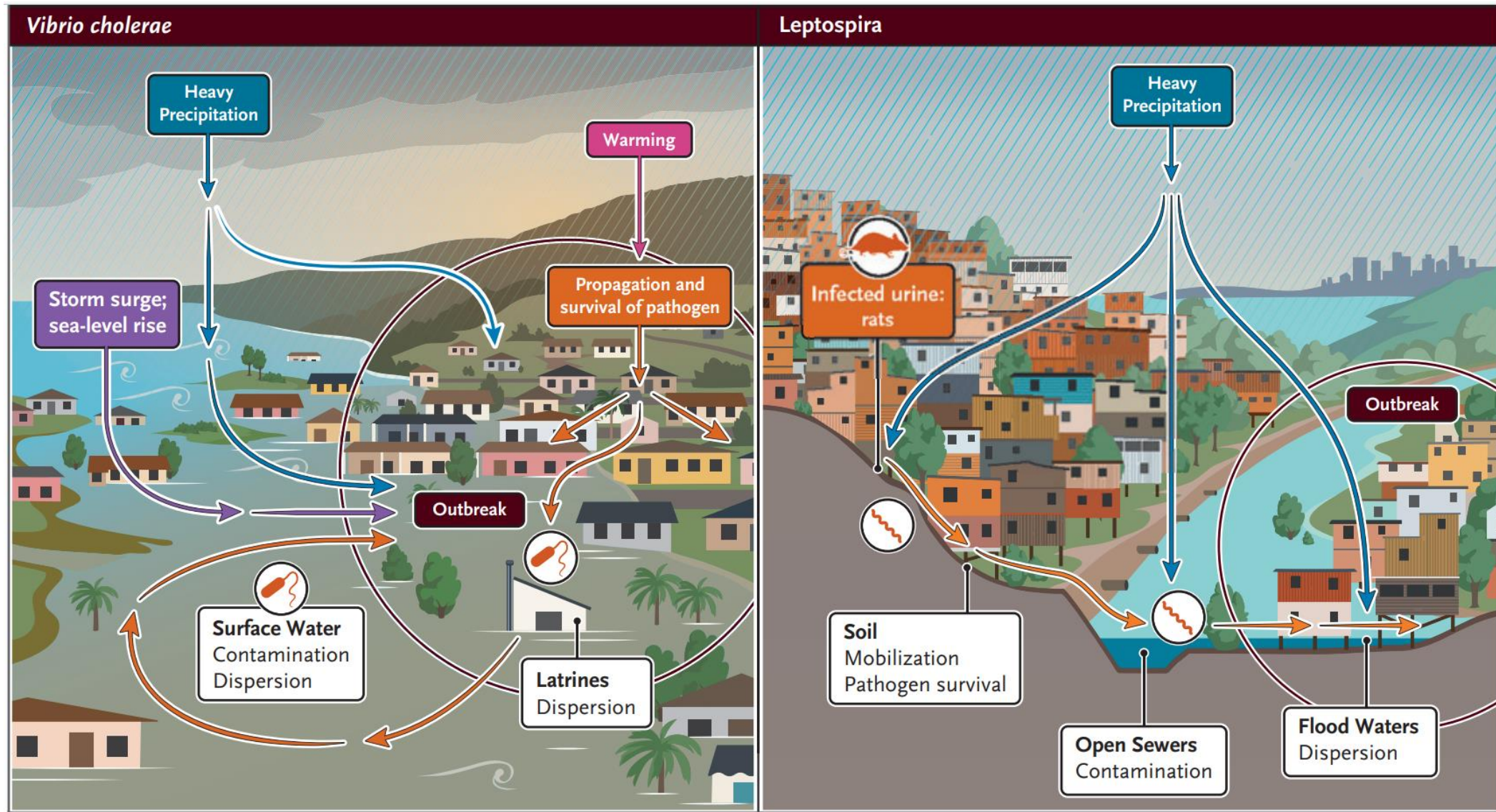


Erreger	Kommentar
Rhino-Virus	Many types – pleconaril no longer available
RS-Virus	2 vaccines, 1 monoclonal antibody licensed & recommended in USA
Influenza A / B	Many vaccines Therapy: Neuraminidase-Inhibitors
SARS-CoV-2	Many vaccines 2 Medications available
Enterovirus	Many serotypes; EV71: HFMD - Vaccines available in Asia
Human Metapneumo-Virus	None
Parainfluenza-Viren 1, 2, 3, 4	None
Adeno-Virus	None
Bacteria	Vaccines: Pneumococcus Therapy: Betalactams (pneumococci); macrolides (<i>Legionella</i> , <i>Mycoplasma</i> , <i>Chlamydia</i> , <i>Bordetellae</i>)

Examples: Effects of Climate Change on Disease Transmission



Examples: Effects of Climate Change on Disease Transmission



What we talked about today

- **The US FDA approved two cell-based gene therapies for sickle cell disease (SCD)**
- **GLP-1RAs associated with reduced colorectal cancer risk in drug-naive patients with Type 2 diabetes with and without obesity / overweight**
- **Infants exposed to COVID-19 in the uterus at an increased risk for developmental delays in the first year of life**
- **ARI – summary of available medications and vaccines**
- **How climate change may increase infectious diseases**